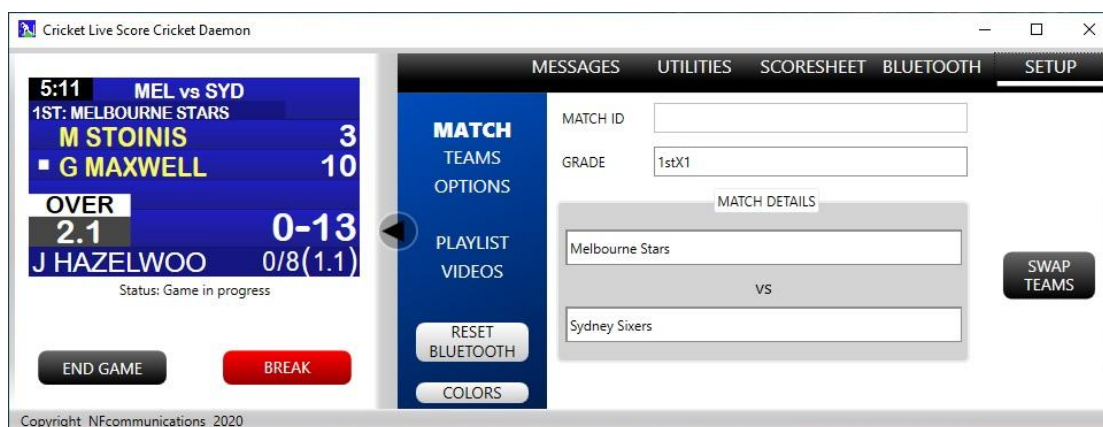


SAM Cricket Live Score User Manual (PlayHQ)



1 Introduction

This document describes how to use the [SAM Cricket Live Score Application](#) to display PlayHQ live scores on the Scoreboard.

The Scorer uses the PlayHQ app on a smart device (or the scoreboard laptop), and the [SAM Cricket Live Score Application](#) automatically displays the score on the scoreboard without user intervention.

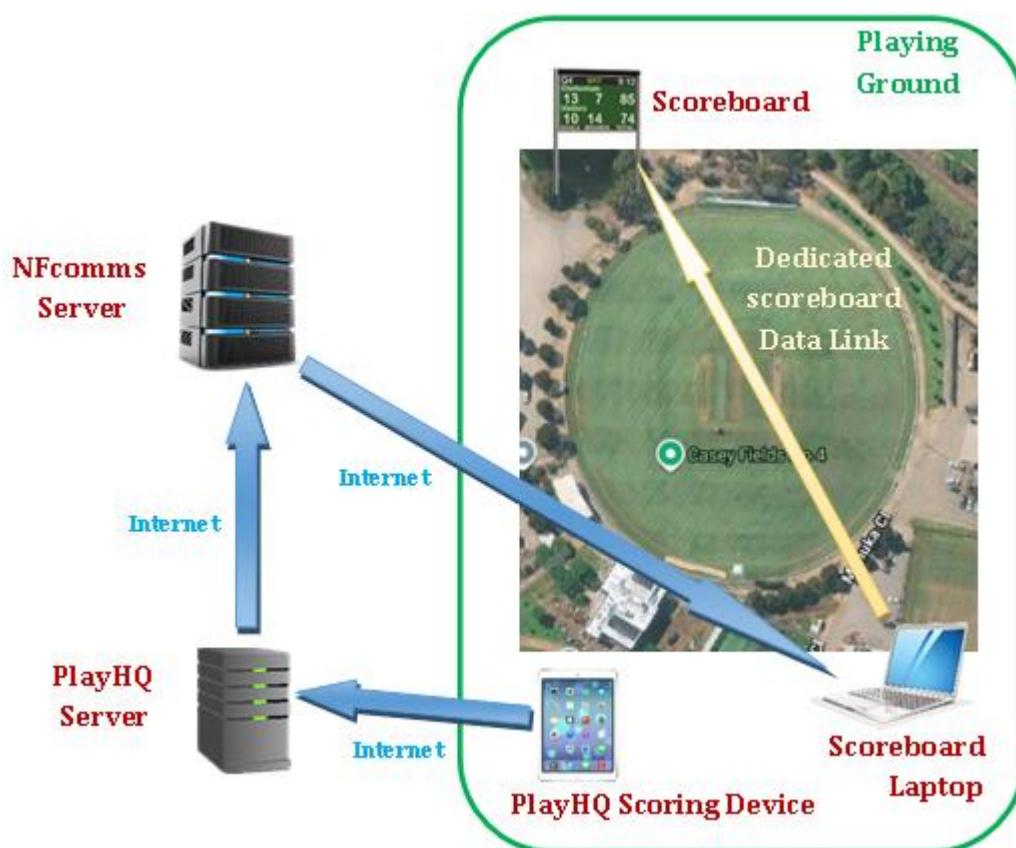
This allows a single point of score entry from the smart device when using the NFcomms Scoreboard system.

2 Overview

PlayHQ Live Score is a web-based scoring system. This means that the Scorer can use any browser, such as Edge, Chrome, Safari to score using the PlayHQ web site, or a PlayHQ app.

The Scorer can use any device, such as a smart phone or iPad, a computer or even the NFcomms Scoring Laptop. **The scoring device, and the NFcomms scoring computer/laptop, both need internet access.**

When the Scorer enters a score such as a dot ball on the scoring device, a signal is sent over the internet to the PlayHQ server. The PlayHQ server updates the score on their web page for all to see, and also recognizes that the new score has come from the registered local game, so it sends a signal to the NFcomms server which then recognizes the local scoreboard and sends a signal to the scoring laptop running the ***SAM Cricket Live Score Application***. The ***SAM Cricket Live Score Application*** then updates the score on the Scoreboard screen.



Notes:

- There is no direct connection between the Scoring Device (say an iPad) and the Scoreboard laptop (supplied by NFcomms). No need for “pairing” or connecting to each other.
- The Scoring Device and the Scoreboard laptop (Supplied by NFcomms) can be the same device. The Scoreboard laptop can be used as the PlayHQ scoring device.
- The delay between score entry and display on the scoreboard should be no more than a few milliseconds.

3 Setup

Follow the steps below to setup the scoreboard system:

1. Select a Scoring Device such as an iPad or use the Scoreboard Laptop and setup PlayHQ scoring for the game.
2. Ensure that the Scoring Device and the Scoreboard Laptop are both connected to the internet.
3. Turn on the Scoreboard system and the Scoring Laptop and start the **SAM Cricket Live Score** application.
4. The opening screen allows the selection of 3 options.

The **User Account** option allows different advertising, logos and other uses for different teams or users of the ground such as juniors, seniors etc.

The **Scoreboard Format** selects different screen layouts on the screen.

Ground option. Some grounds have multiple ovals. The **Ground** option selects the ground that the game will be played on.



- Press OPEN to start the main screen.

The program starts to display the advertisements on the scoreboard that are programmed under “PLAYLIST”. See next section.

Above the screen display representation box, “**LIVE**” should be displayed, indicating that the internet and the NFcomms Server are connected. If the various fields are populated, such as the Players list, then the PlayHQ server is connected and is ready for displaying live scores.



- Select Game.** In the section “Match Centre”, select the Game that has been supplied by PlayHQ. If the ground has multiple ovals, games on these should be displayed. Select the game that will be scored.
- Populating the data fields.** When the game is selected, all the match data associated with that game will be automatically downloaded from PlayHQ, including Player names, team names, game status and current scores if resuming a game.
- Start scoring.** When ready to start displaying the Live scores and stop displaying the advertisements on the Scoreboard, press “**START**” to display the live scores on the Scoreboard. The Scoreboard Laptop can be left alone for the remainder of the game. **The Scorer continues scoring on the PlayHQ device alone.**
- End of Overs, player changes, 4’s & sixes.** Videos and pictures will be displayed automatically at the End of Overs, when 4’s or 6’s are scored, or when a player is dismissed and a new player is selected. See next section to configure what happens on these events/triggers.
- Play Breaks.** The **SAM Cricket Live Score** interface will detect when the Scorer, using the PlayHQ app, initiates a break or end of innings. Advertisements will be displayed according to the Playlist that has been setup. See next section.

4 Configuration

The main screen of the *SAM Cricket Live Score* interface has tabs and options within those tabs to configure settings of the program.

4.1 Setup Tab

The Setup tab allows various parameters to be modified such as how the player names are displayed and allows the user to control the sponsors' advertisements and when they are displayed.

4.2 Livescore Tab

This tab is for diagnostic purposes and is not normally needed.